

MAD

MUSEU DE ARTES DIGITAIS



ESTATÍSTICAS

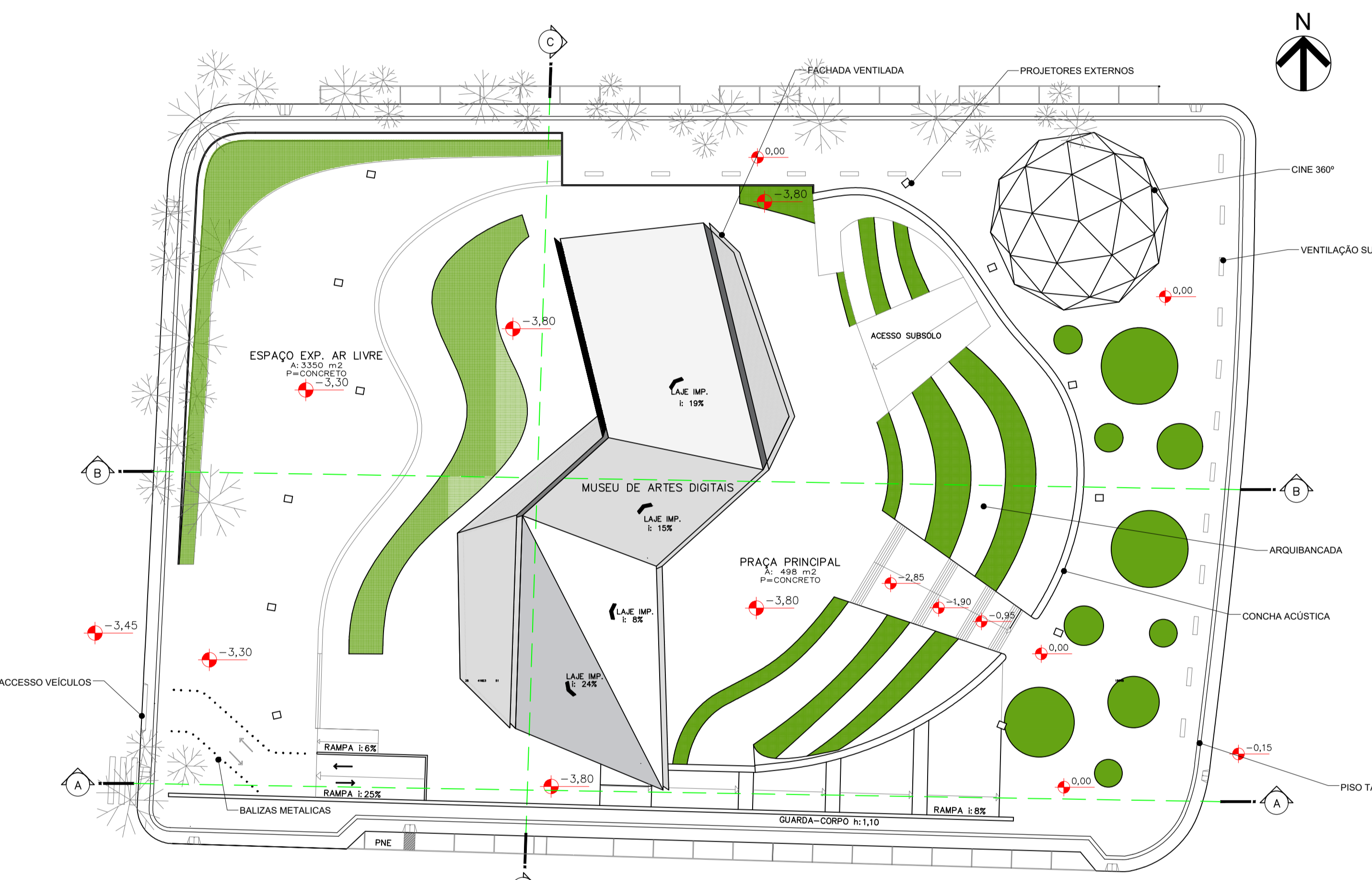
ÁREA TERRENO: 12.175,67 m²

EDF. CENTRAL (1285,84m²) + demais pav. (823,44m²)
 CAFETERIA, SOUVINIERS, SALAS DE MANUTENÇÃO E DEPOSITO (578,81m²)
 ARQUIBANCADA (2000 m²)
 ESTACIONAMENTO (1493,91m²)
 CINEMA 360 (415m²)
 ÁREA A CONSTRUIR: 5771,72m²

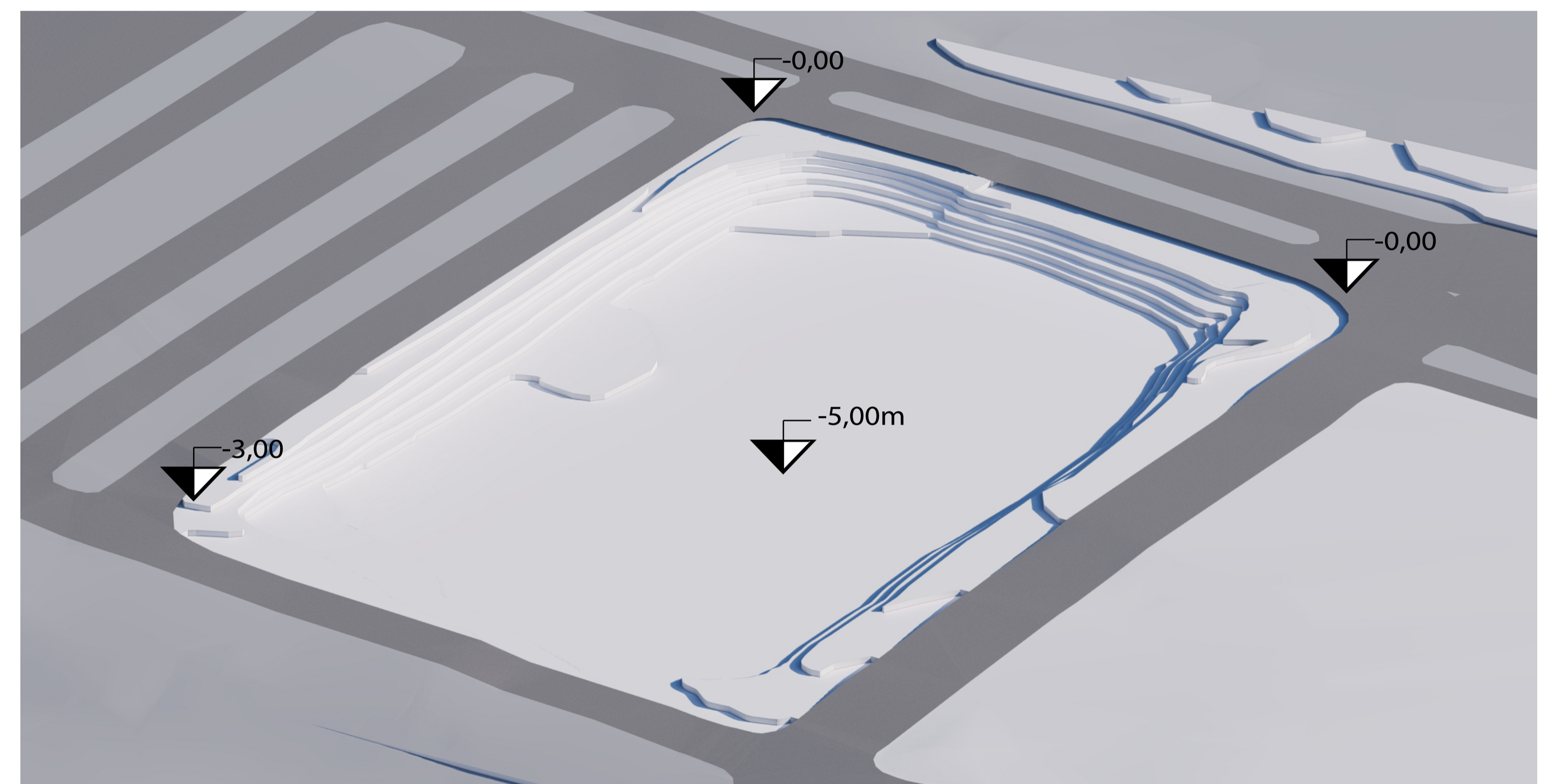
TAXA DE OCUPAÇÃO: 47%

COEFICIENTE DE APROVEITAMENTO: 0,54

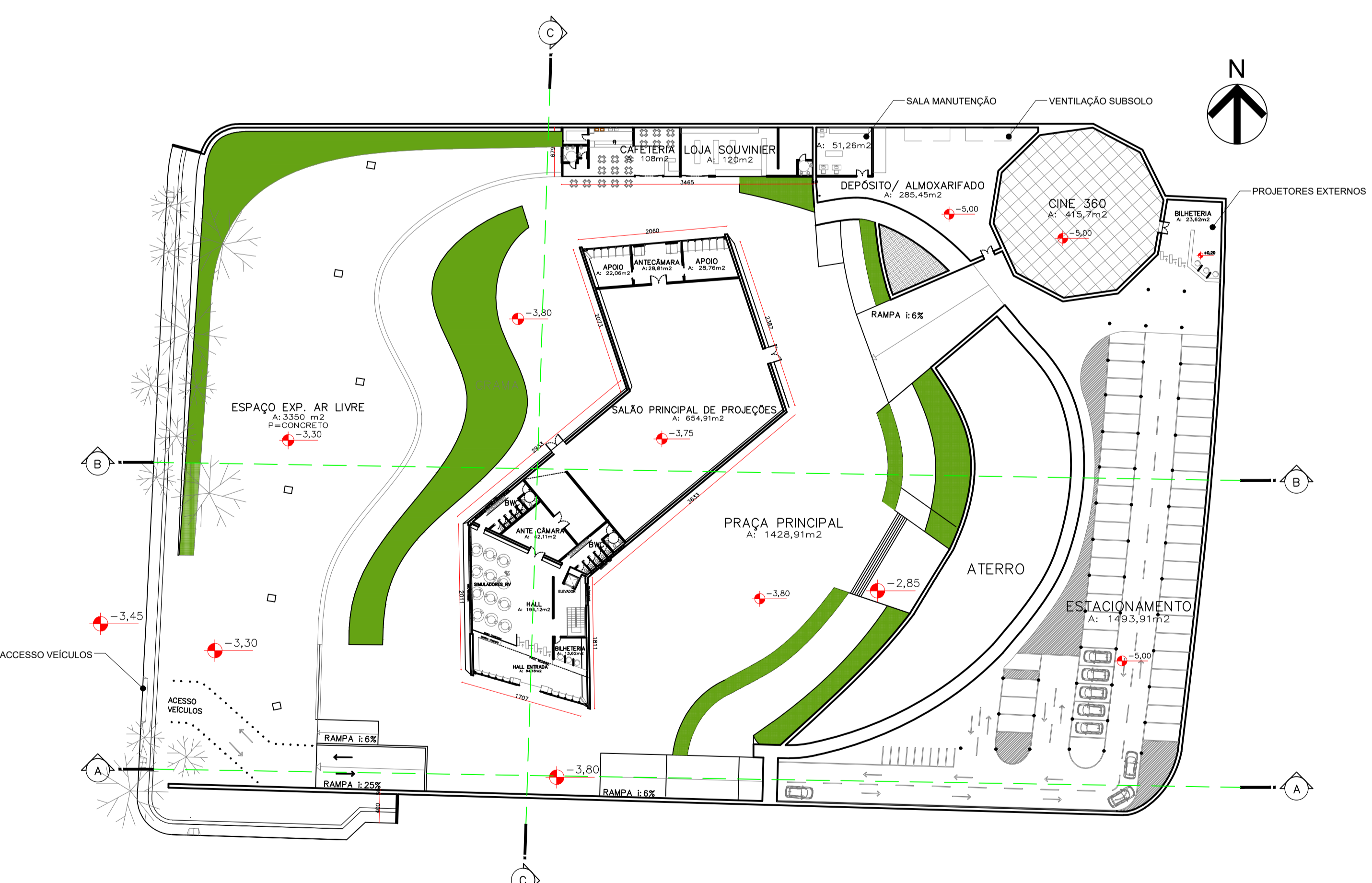
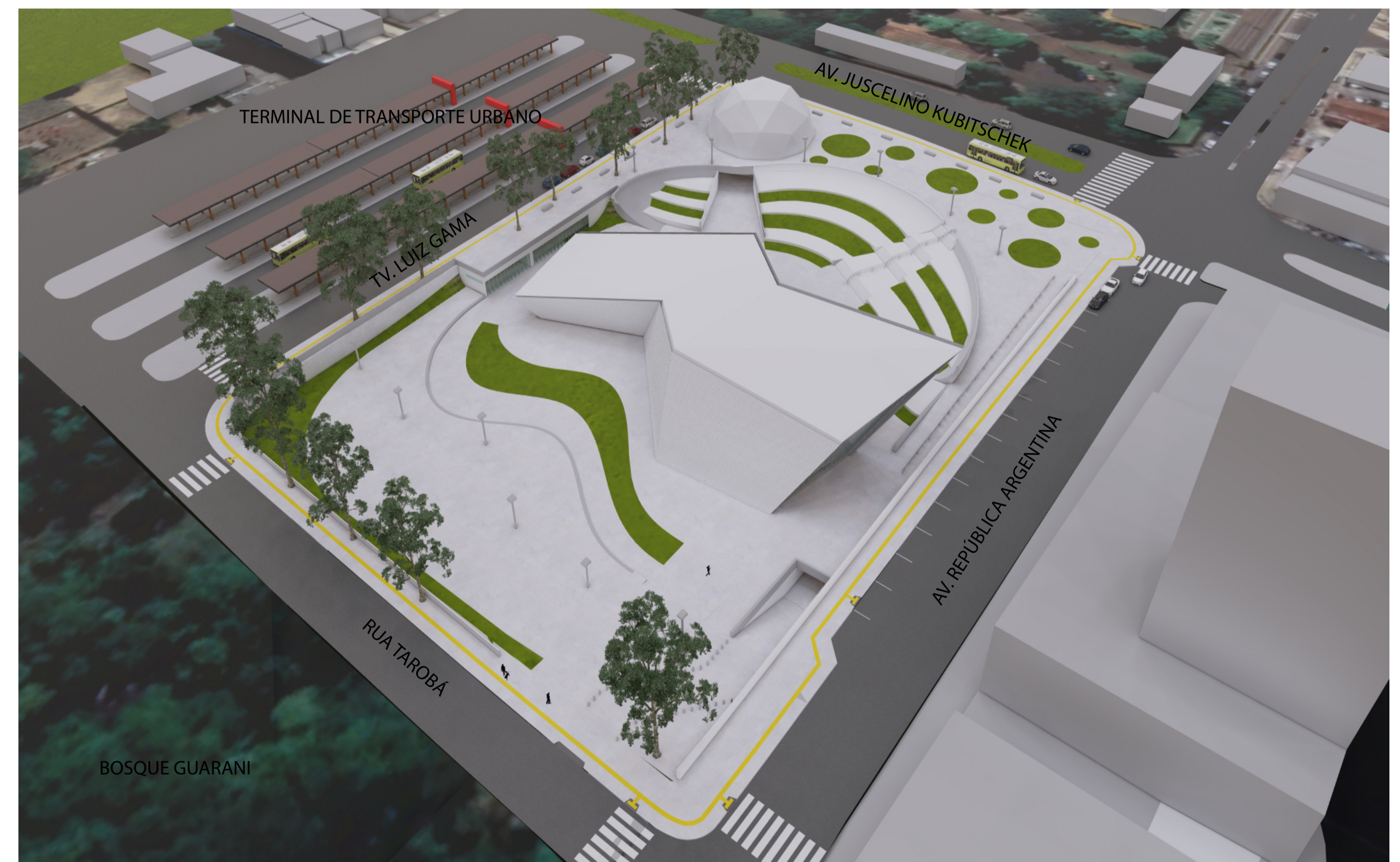
TAXA DE PERMEABILIDADE: 13% área permeável: 1680 m (mínimo exigido:7,5%)



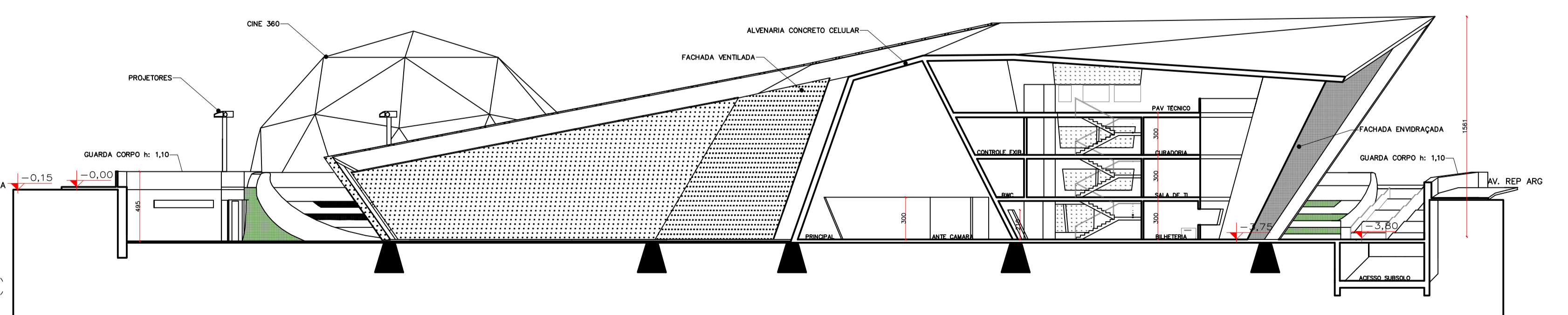
TOPOGRAFIA



VISTA AÉREA



CORTE B-B escala:1/250



CORTE C-C escala:1/250

